

What happens then?

Upon receiving your call an Access and Information Officer will ask a number of questions in order to gather all the relevant information, and then forward your details to the appropriate team/voluntary agency that will provide the necessary assistance.

Interested in becoming involved in the development and/or evaluation of this or any other Trust services?

For information on:

- How to become involved
- Opportunities for involvement
- Support available.

Please contact the Personal and Public Involvement Team:

Telephone:

028 3756 4469

Email:

carolyn.agnew@southerntrust.hscni.net

www.southerntrust.hscni.net/about/1600.htm

How do I contact the service?

You can contact the Access and Information Service by:

Telephone:

028 3756 4300
(Mon - Fri: 8.30am - 5.00pm)

028 9504 9999 (out of hours)

Email:

access.information@southerntrust.hscni.net

Letter:

Access and Information Service
Mullinure Health & Wellbeing Centre
Level 2, Loughgall Road
Armagh BT61 7NQ

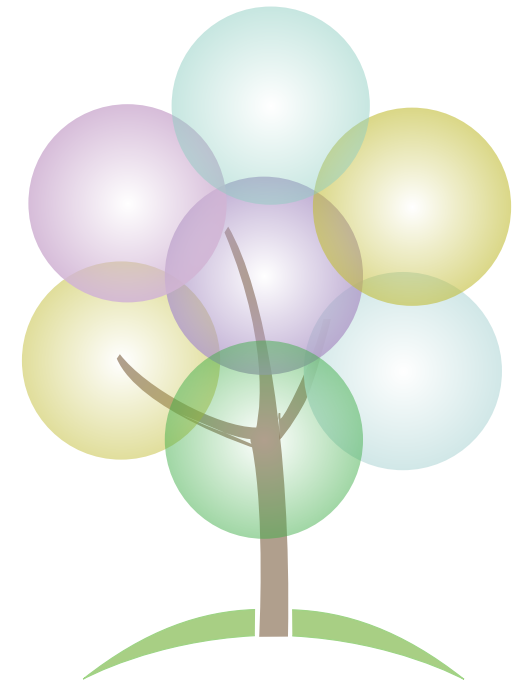
If calling outside of opening hours please call:

Regional Emergency Social Work Service on 028 9504 9999



Access and Information Service

Supporting YOU to live well



Mullinure Health & Wellbeing Centre

What is Access and Information?

The Access and Information Service offers advice and information on a range of local services available to older people.

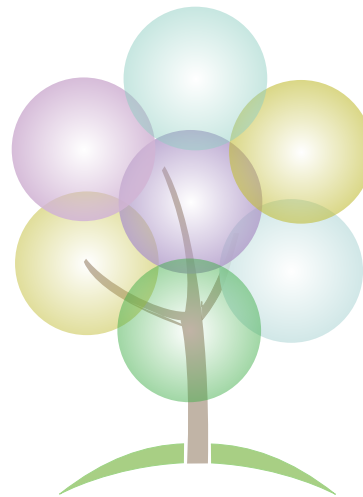
This means one point of contact Trust wide for Older People, providing an accessible and responsive service to meet individual needs.



The Access and Information Team is part of the Promoting Wellbeing Division of the Older People and Primary Care Directorate within the Southern Health and Social Care Trust.

Access and Information aims to:

- Provide full and relevant information for service users, relatives and carers within a confidential and supportive environment
- Empower service users, relatives and carers enabling them to influence their situation in a positive way
- Answer queries accurately and signpost to other services when appropriate.



Supporting YOU to live well

Who can access the service?

- Anyone aged 65yrs+ and living in the Southern Trust area who is struggling to complete daily living tasks independently and/or feels isolated or lonely and would like connected to local support services
- A relative and/or carer seeking assistance for an older person who lives in the Southern Trust area
- ANYONE wanting to find out information or discuss referral pathways on services for older people in the Southern Trust area.

